

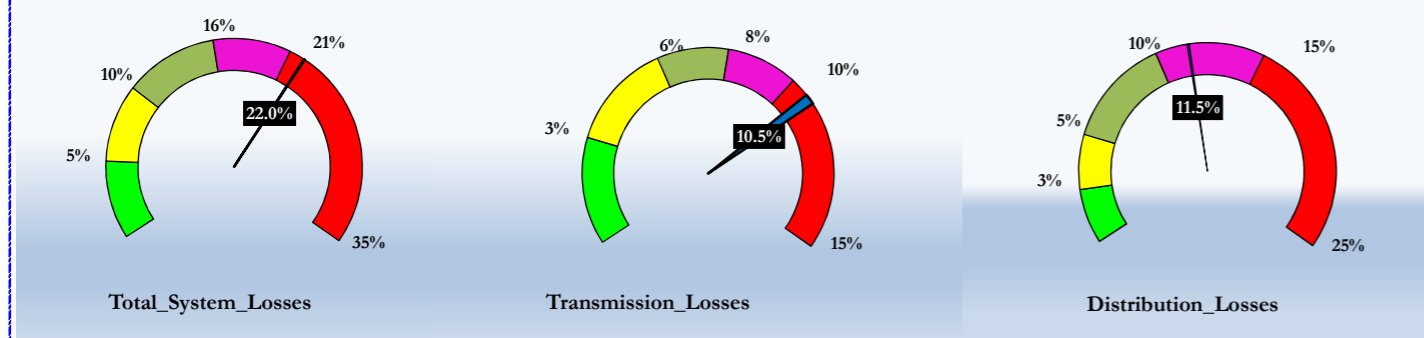


Select from Drop Down List (Highlighted in Yellow)

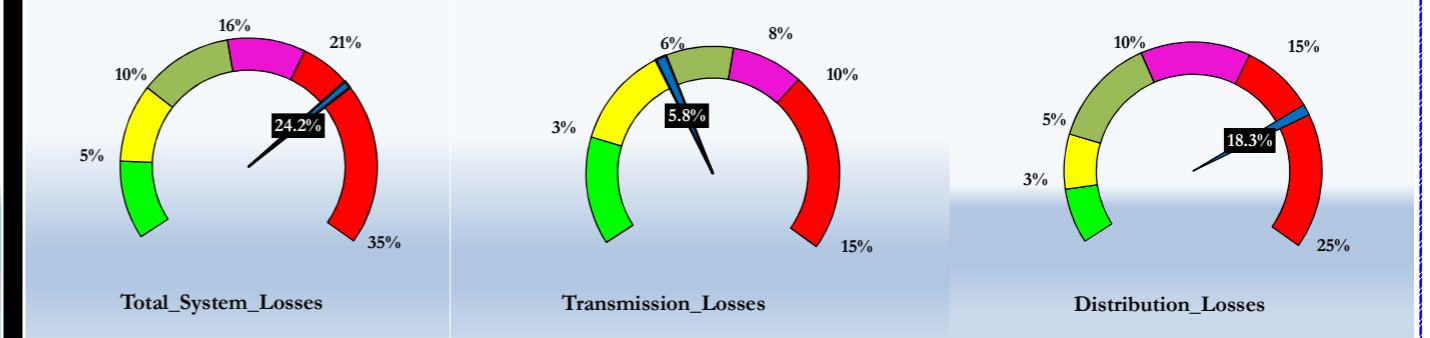
1. OPERATIONAL EFFICIENCY

System Losses (Technical and Non-Technical)

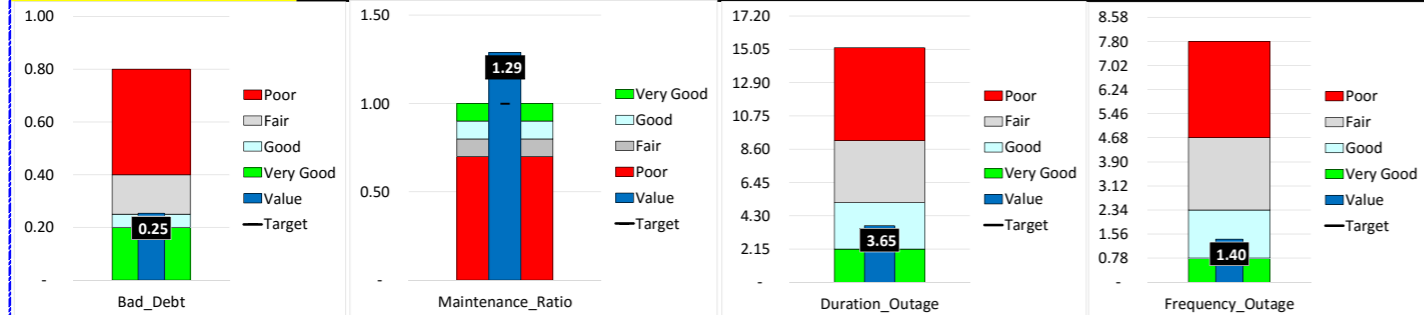
Year	Quarter	Total System Losses	Transmission Losses	Distribution Losses
base_year	Baseline FY2013	22.0%	10.5%	11.5%



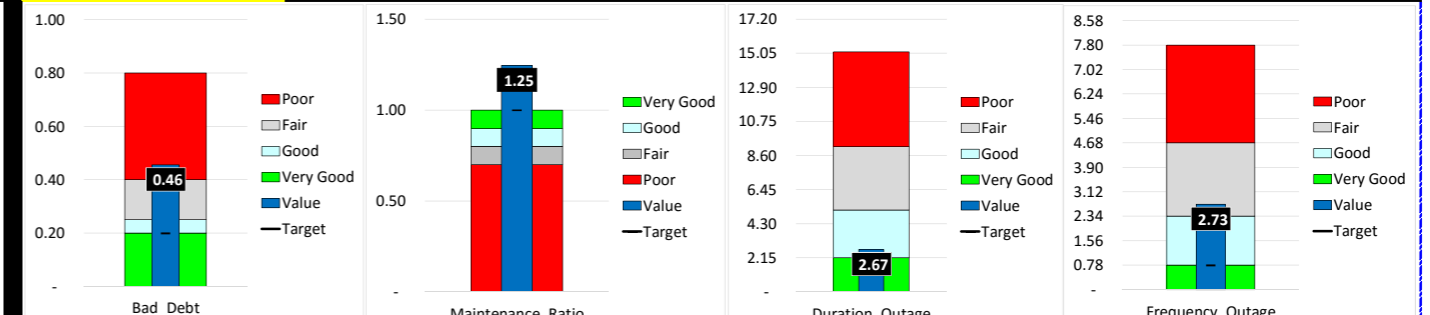
Year	Quarter	Total System Losses	Transmission Losses	Distribution Losses
comp_yr_3	Jan_Mar16	24.2%	5.8%	18.3%



Year	Quarter	Bad Debt	Maintenance Ratio	Duration Outage	Frequency Outage
base_year	Baseline FY2013	0.25	1.29	3.65	1.40



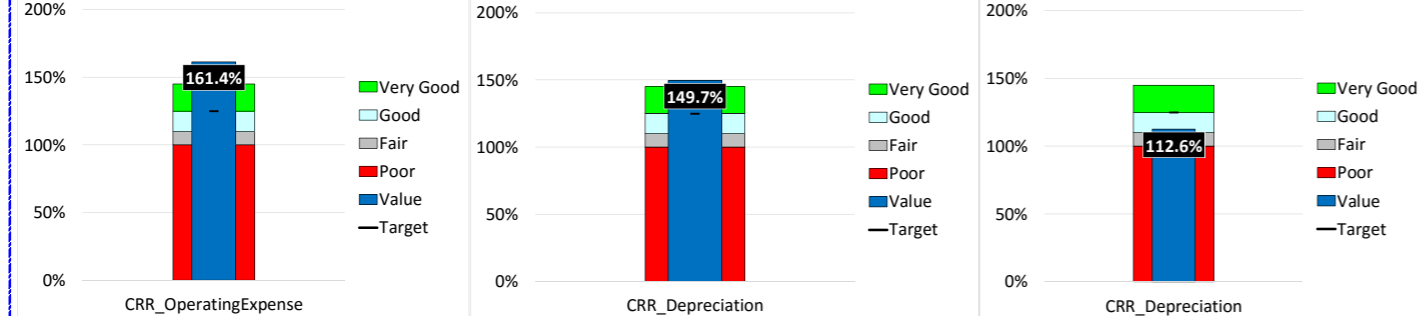
Year	Quarter	Bad Debt	Maintenance Ratio	Duration Outage	Frequency Outage
comp_yr_3	Jan_Mar16	0.46	1.25	2.67	2.73



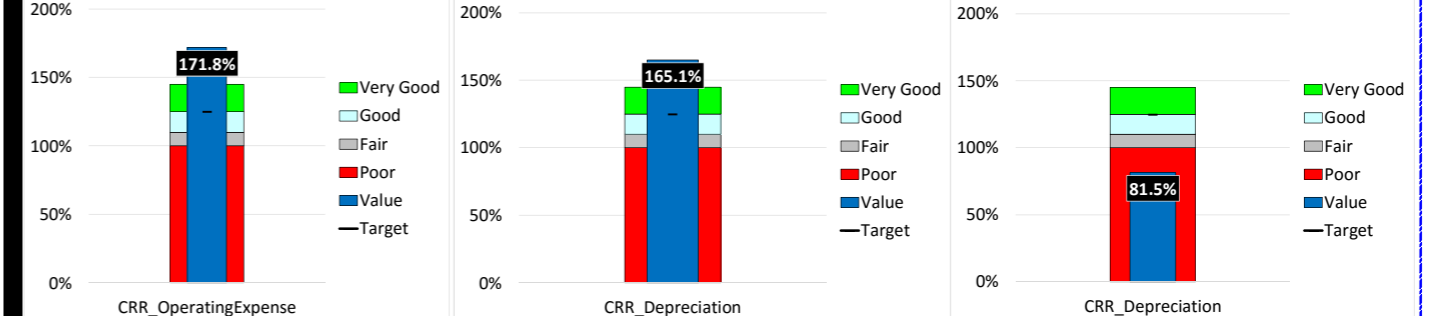
2. IMPROVED ESCOM FINANCIAL HEALTH

Cost Recovery Ratio

Year	Quarter	CRR OperatingExpense	CRR Depreciation	CRR TotalCost
base_year	Baseline FY2013	161.4%	149.7%	112.6%

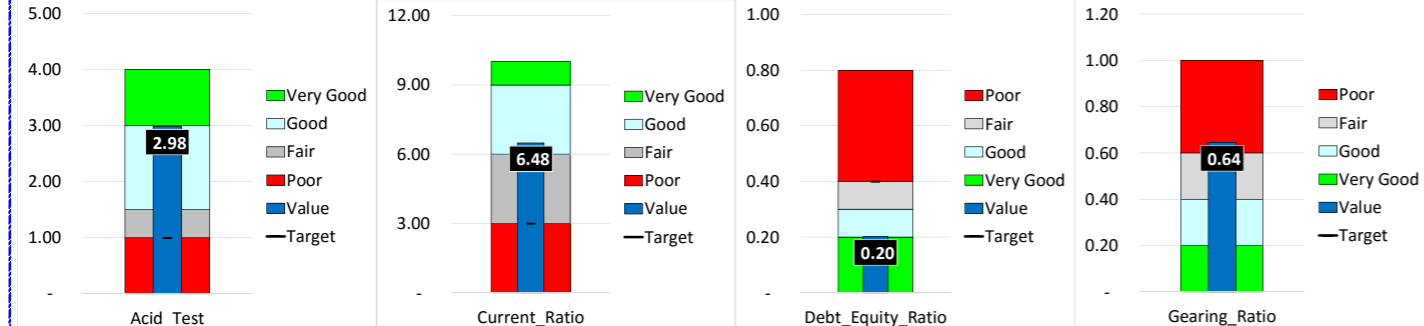


Year	Quarter	CRR OperatingExpense	CRR Depreciation	CRR TotalCost
comp_yr_3	Jan_Mar16	171.8%	165.1%	81.5%

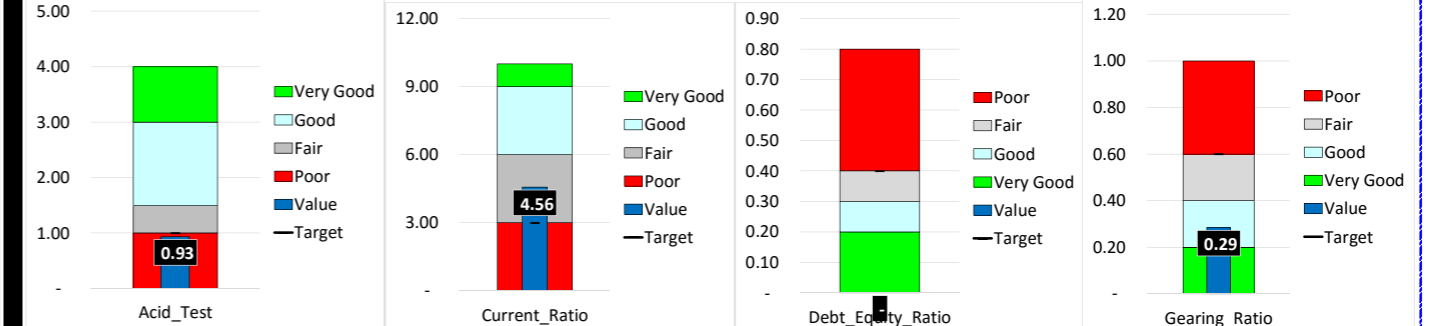


Liquidity Ratios

Year	Quarter	Acid Test	Current Ratio	Debt Equity Ratio	Gearing Ratio
base_year	Baseline FY2013	2.98	6.48	0.20	0.64



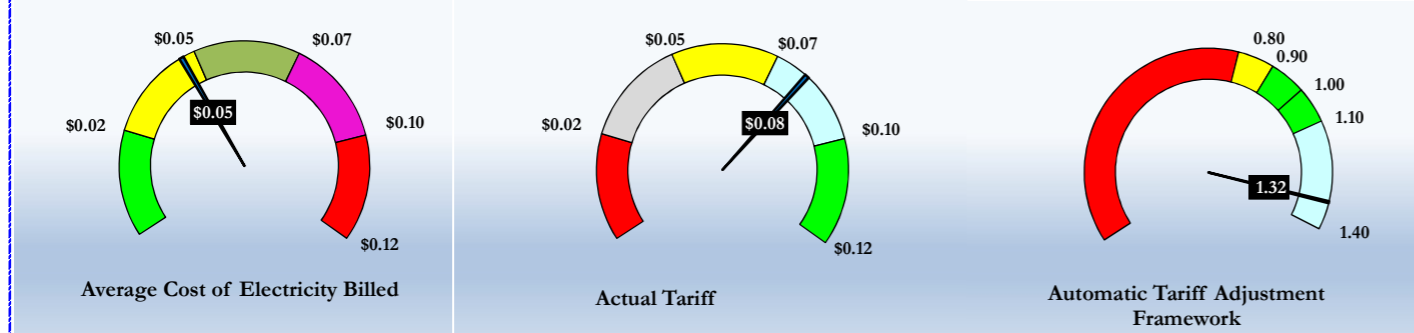
Year	Quarter	Acid Test	Current Ratio	Debt Equity Ratio	Gearing Ratio
comp_yr_3	Jan_Mar16	0.93	4.56	-	0.29



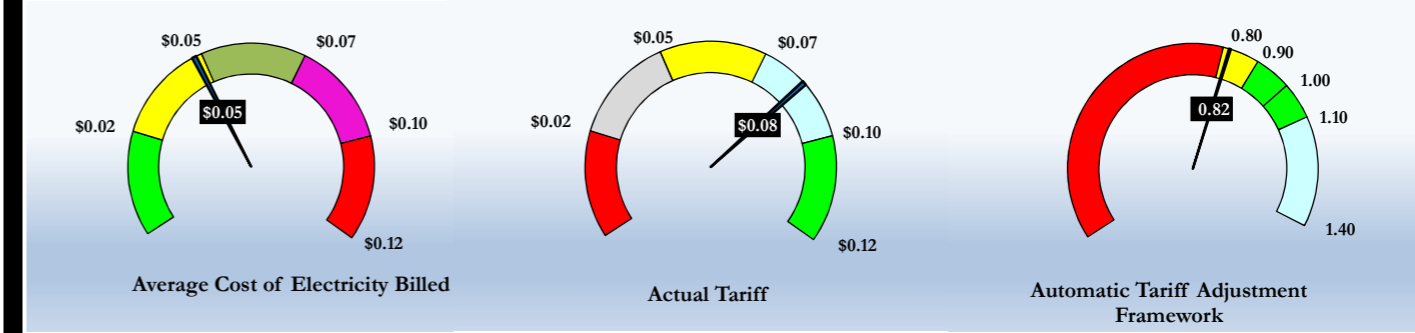


**Tariff Analysis (Cost-Reflectivity)**

Year	Quarter	Average Cost Electricity Billed	Cost of Supply	ATAF
base_year	Baseline FY2013		\$0.05	\$0.08
				1.32

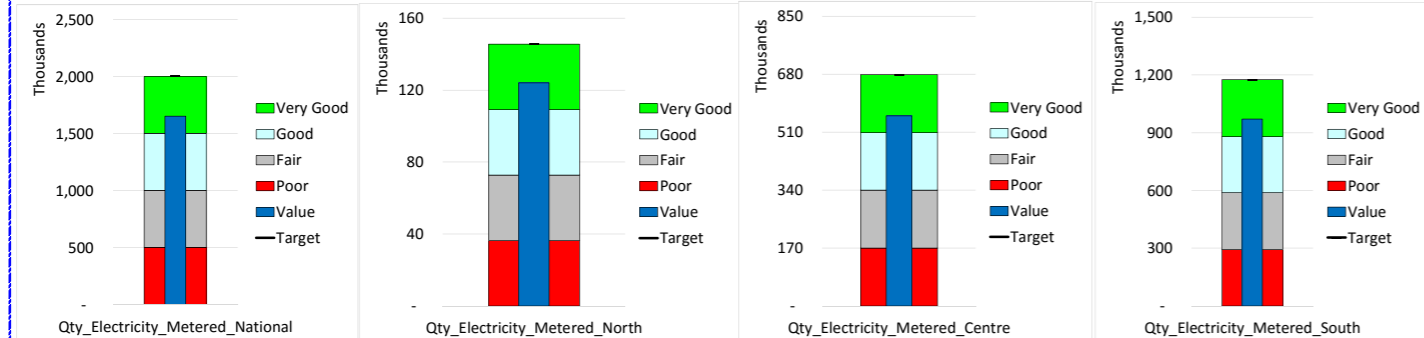


Year	Quarter	Average Cost Electricity Billed	Cost of Supply	ATAF
comp_yr_3	Jan Mar16		\$0.05	\$0.08
				0.82

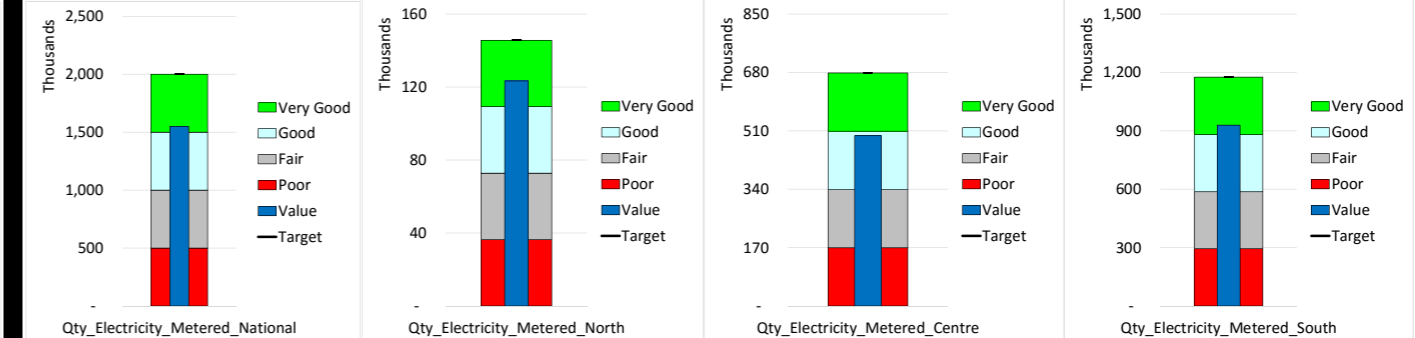


**Utility Growth Analysis**

Year	Quarter	Qty Electricity Metered National	Qty Electricity Metered North	Qty Electricity Metered Centre	Qty Electricity Metered South
base_year	Baseline FY2013	1,652,376	124,031	557,148	971,196

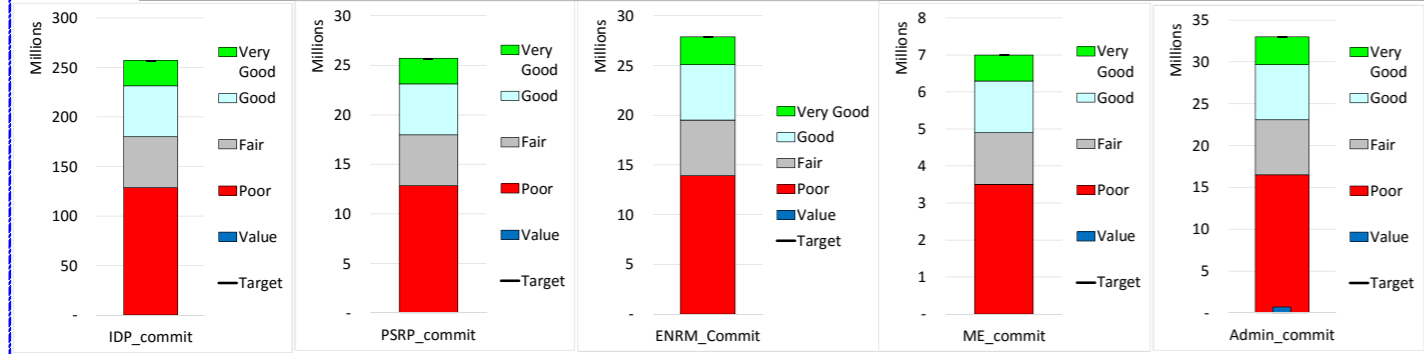


Year	Quarter	Qty Electricity Metered National	Qty Electricity Metered North	Qty Electricity Metered Centre	Qty Electricity Metered South
comp_yr_3	Comp FY2016	1,548,869	123,374	495,635	929,860

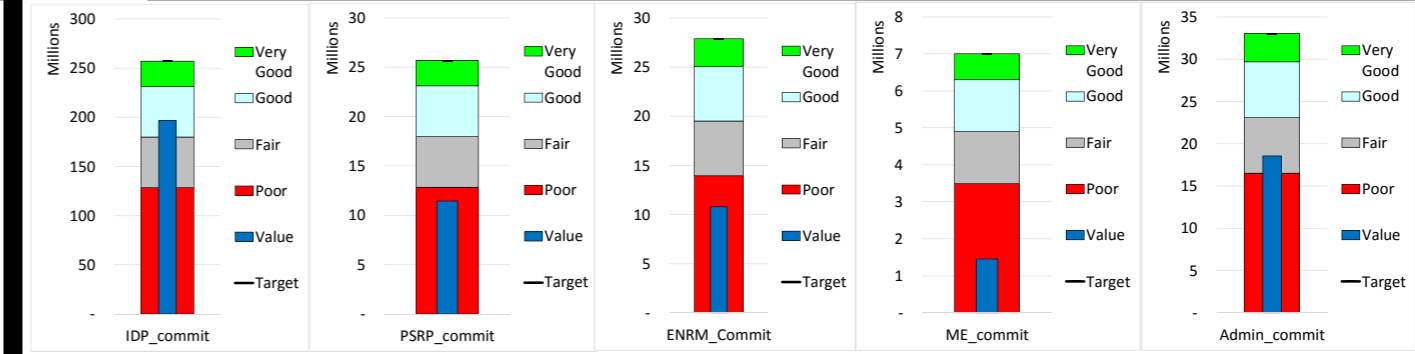


**3. COMPACT PERFORMANCE (COMMITMENTS VERSUS DISBURSEMENTS)**

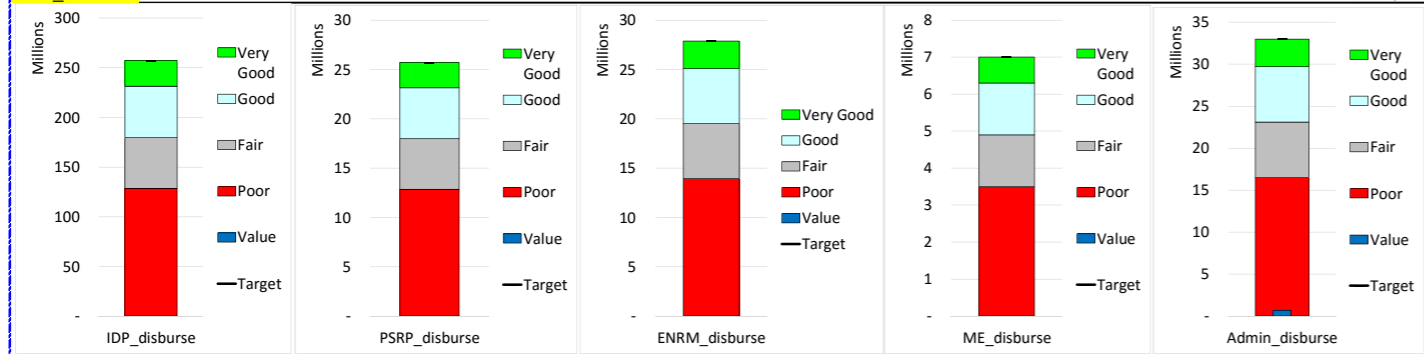
Year	IDP commit	PSRP commit	ENRM Commit	ME commit	Admin commit
Cum_FY2013	\$0	\$0	\$0	\$0	\$709,536



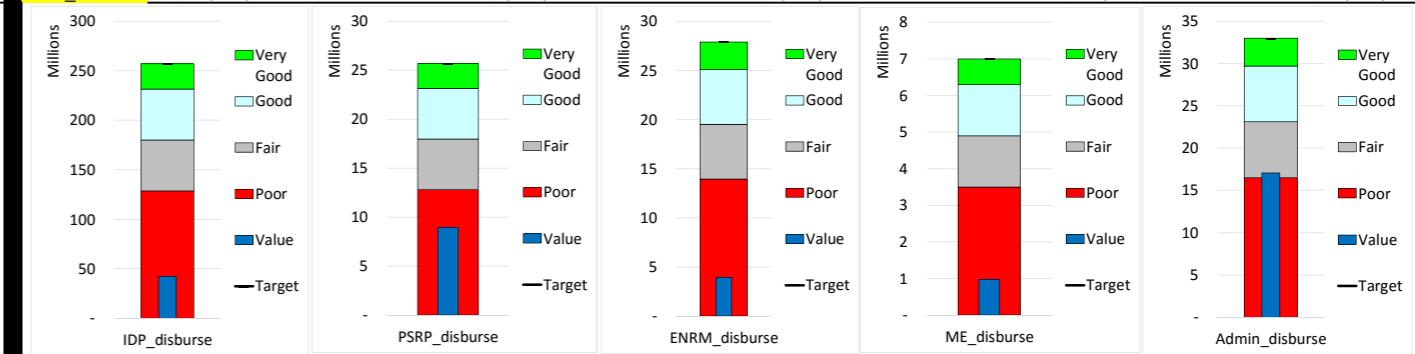
Year	IDP commit	PSRP commit	ENRM Commit	ME commit	Admin commit
Cum_FY2016	\$196,585,253	\$11,441,637	\$10,800,227	\$1,454,838	\$18,566,400



Year	IDP disburse	PSRP disburse	ENRM disburse	ME disburse	Admin disburse
Cum_FY2013	\$0	\$0	\$0	\$0	\$709,536



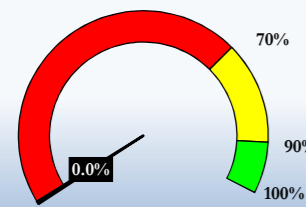
Year	IDP disburse	PSRP disburse	ENRM disburse	ME disburse	Admin disburse
Cum_FY2016	\$41,932,849	\$8,927,590	\$3,950,500	\$968,121	\$17,064,312



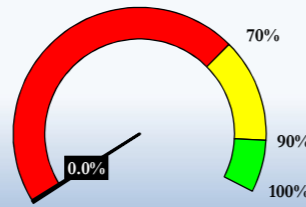


4. PERCENT COMPLETION

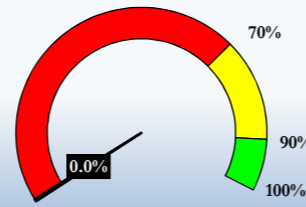
Year	IDP commit	PSRP commit	ENRM Commit
percent completion_FY2013	0.0%	0.0%	0.0%



IDP\_commit

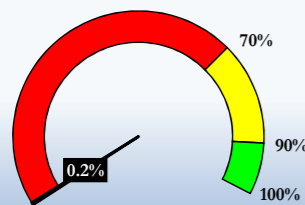


PSRP\_commit

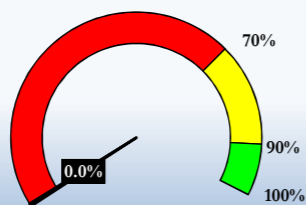


ENRM\_Commit

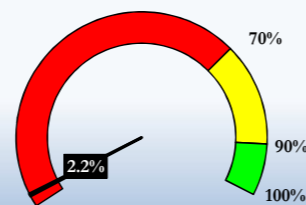
Year	Compact commit	ME commit	Admin commit
percent completion_FY2013	0.2%	0.0%	2.2%



Compact\_commit

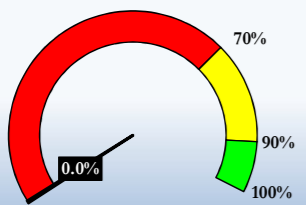


ME\_commit

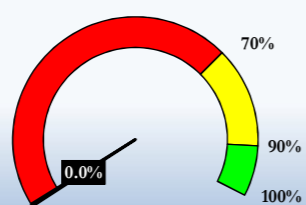


Admin\_commit

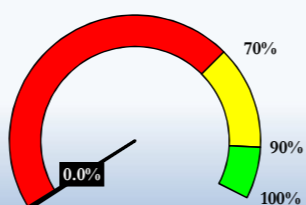
Year	IDP disburse	PSRP disburse	ENRM disburse
percent completion_FY2013	0.0%	0.0%	0.0%



IDP\_disburse

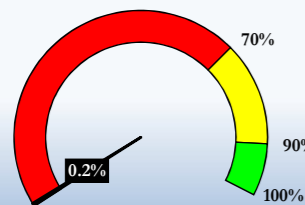


PSRP\_disburse

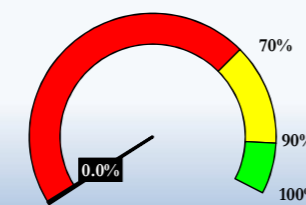


ENRM\_disburse

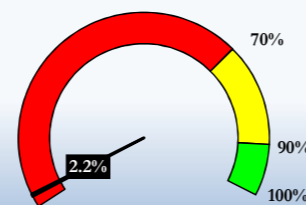
Year	Compact disburse	ME disburse	Admin disburse
percent completion_FY2013	0.2%	0.0%	2.2%



Compact\_disburse

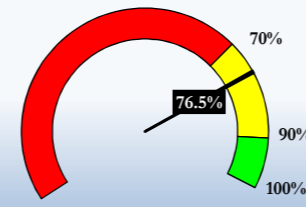


ME\_disburse

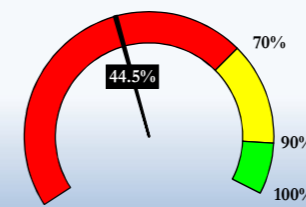


Admin\_disburse

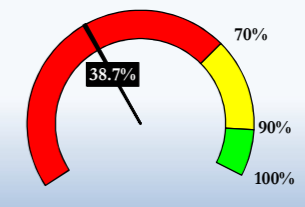
Year	IDP commit	PSRP commit	ENRM Commit
percent completion_FY2016	76.5%	44.5%	38.7%



IDP\_commit

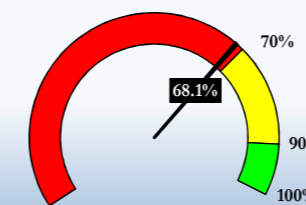


PSRP\_commit

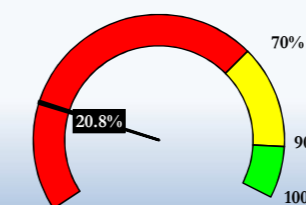


ENRM\_Commit

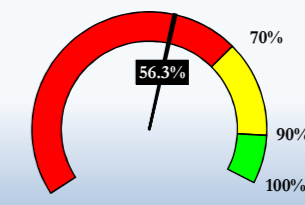
Year	Compact commit	ME commit	Admin commit
percent completion_FY2016	68.1%	20.8%	56.3%



Compact\_commit

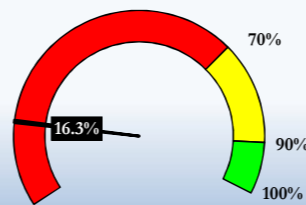


ME\_commit

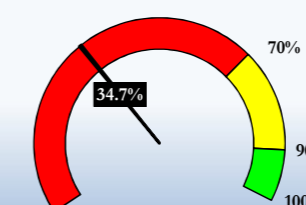


Admin\_commit

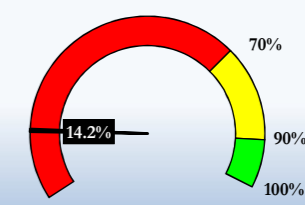
Year	IDP disburse	PSRP disburse	ENRM disburse
percent completion_FY2016	16.3%	34.7%	14.2%



IDP\_disburse

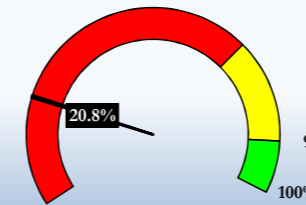


PSRP\_disburse

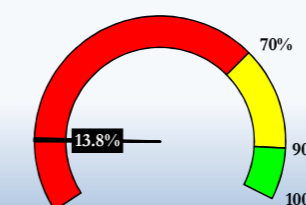


ENRM\_disburse

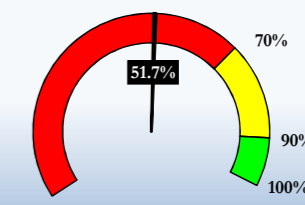
Year	Compact disburse	ME disburse	Admin disburse
percent completion_FY2016	20.8%	13.8%	51.7%



Compact\_disburse



ME\_disburse



Admin\_disburse